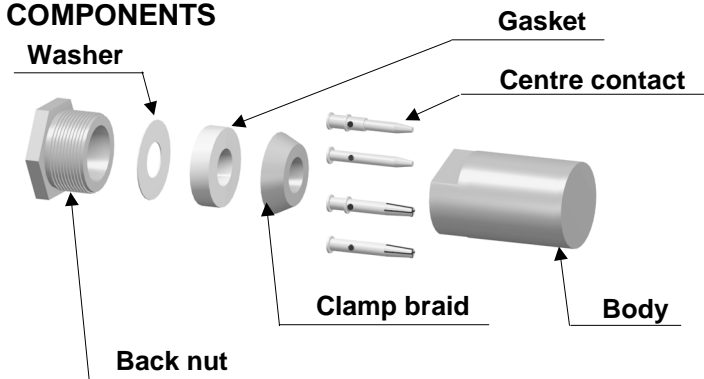
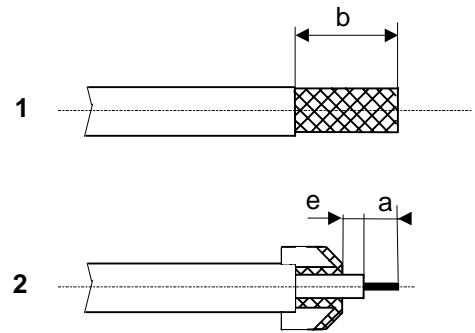


# Clamp 03 : Flat gasket

## COMPONENTS

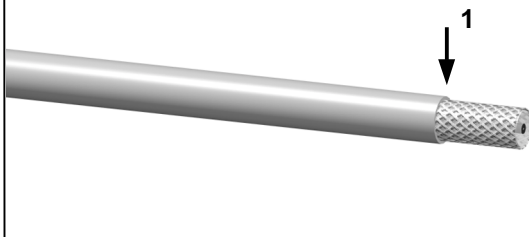


## STRIPPING DIMENSIONS



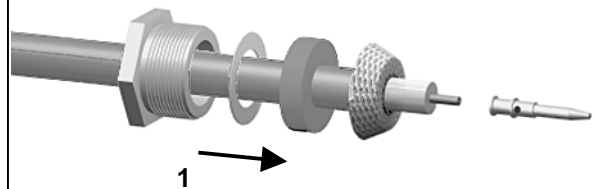
1

Strip the cable as shown in sketch 1.



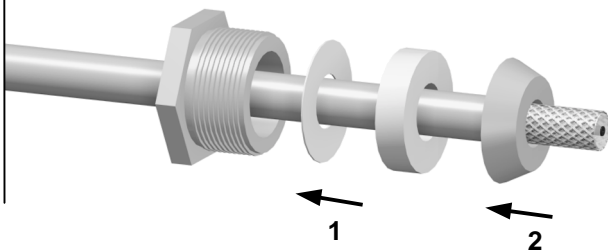
4

Slide the back nut over the cable assembly.



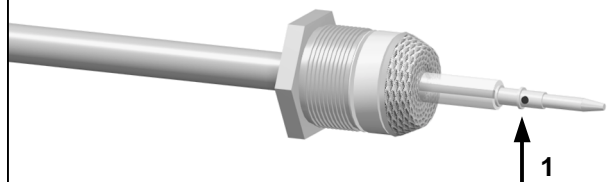
2

Slide the clamp nut, the washer and the gasket onto the cable.  
Slide the clamp braid sleeve over the braid.



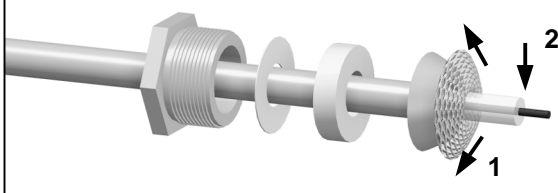
5

Solder the centre contact onto the inner conductor.



3

Fold the braid back and trim off the extra braid.  
Trim dielectric back as shown in sketch 2.



6

Screw sub-assembly into the connector body with the adapted wrench.  
Recommended coupling torque ( see connector TDS ).

